

Industrial Applications

WeirWasher, ACS removes Grease Wax, Polymers, Resins, Pulp, Fibers and other sticky materials from the weirs, trough and other surfaces. The spray apparatus does not contact the surface so it will not clog with the material being removed.



- ~Pulp & Paper
- ~Mining
- ~Oil Refining
- ~Steel Production
- ~Chemical Plants
- ~Food Processing

- ~Reduce Manual Cleaning Risks
- ~Reduce Algae Collection/Cleaning
 - >UV Beds
 - >Sand Filters
- ~Non Contact Cleaning Method Prevents Fouling Maintenance
- ~Minimal Maintenance Time/Costs
- ~Reduce Water Usage
- ~Protect UV Investment
- Control Debris Fouling Automatically

Representatives-Webpage



Please visit www.gilltrading.com to view videos of various Eco-Blaster, BCS applications and find your local representative.

Please contact **GILLTEQ, LLC** for more information.

23781 US-27 Ste. #109, Lake Wales, Florida, 33859
Phone: 1-866-447-2496 | Fax: 1-503-646-9293
Email: info@gilltrading.com
web: www.gilltrading.com



Other Products

- ~EcoBlaster, Foreign Material Control
- ~Stainless Weirs
- ~WeirShield
- ~Weir Rover



WeirWasher™

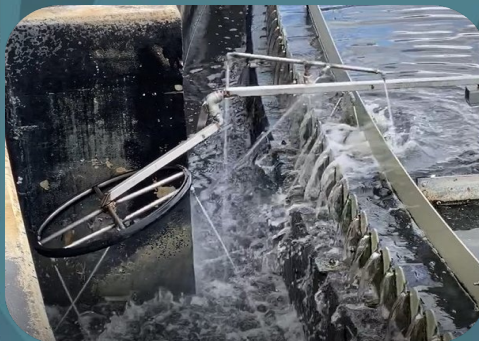
AUTOMATED CLEANING SYSTEMS

WeirWasher Automated Cleaning Systems are the ONLY technology that is SCADA/PLC/TIMER automated. WeirWasher, ACS removes the algae, scum, grease, and other debris that grow and build up on weirs, troughs, baffles and other areas using rotational spray.

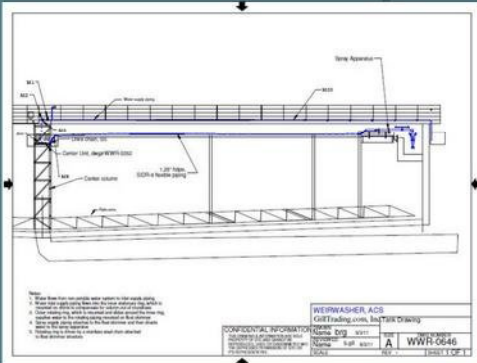


CLARIFIER AND THICKENER APPLICATIONS

- ~Rectangular (chain & flight)
- ~Internal Troughs
- ~Bridge Supports
- ~Multigon Troughs
- ~Square Troughs
- ~Covers (Free-Standing)
- ~Domed Clarifiers



- ~Nozzles provide 1-5 GPM (4-20LPM)
- ~Average water use: 30 Gallons/Min
- ~Rotating Spray Bars (hydraulic powered)
- ~Hydraulic lancing action
- ~Water Pressure requirements at 60-96 PSI
- ~Piping is oversized for system requirements
- ~*Tank water option available



Ecologically Responsible

WeirWasher, Automated Cleaning Systems are engineered to optimize the impingement force of the water spray while minimizing the amount of water used. The PATENTED technology delivers plant process* water to the WeirWasher, ACS spray apparatus. The rotating spray bars require a few nozzles to spray a large area as they travel around the tank on the scum arm.

WeirWasher Automated Cleaning Systems are engineered to the specific design parameters of each tank.



- ~Approved by clarifier manufacturers
- ~Low weight components
- ~+/- inches of deviation accommodated
- ~No counterweights
- ~No structural reinforcements
- ~No mechanical dragging forces on scum arm
- ~All weather use
- ~Grease, algae, oil, scum, duck weed

ADDITIONAL DESIGN OPTIONS INCLUDE:

1. Feed well sprayer
2. peripheral channel spray
3. PLC/SCADA Automation
4. Tank bottom sprayer
5. Cover Sprayer



WeirWasher, ACS Cleaning Technology



Articulated Spray

- ~Multiple troughs
- ~Structural supports
- ~Sprayer stays retracted when off
- ~Pipes in trough



Submerged Articulated Spray

- ~Multiple troughs
- ~Structural supports
- ~Sprayer stays retracted when off
- ~Pipes in trough
- ~Brackets



Fixed Spray Apparatus

- ~Multiple troughs
- ~Serpentine weirs
- ~Multigon launder
- ~Internal launder support
- ~Brackets

WeirWasher, ACS clean all clarifier models and configurations!

FOR MORE INFORMATION: www.gillteq.com 866-447-2496