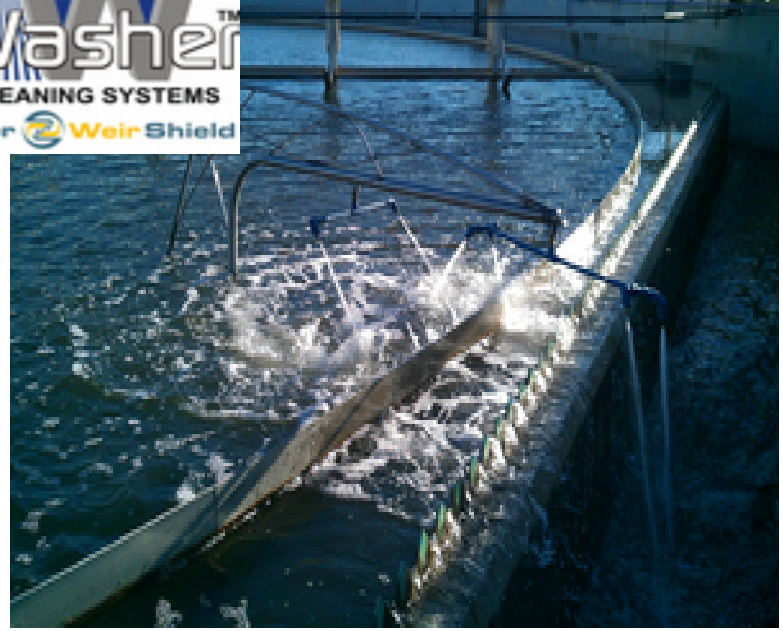
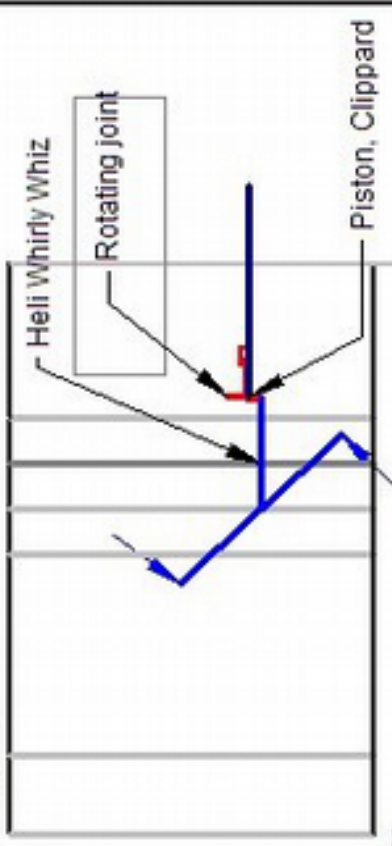
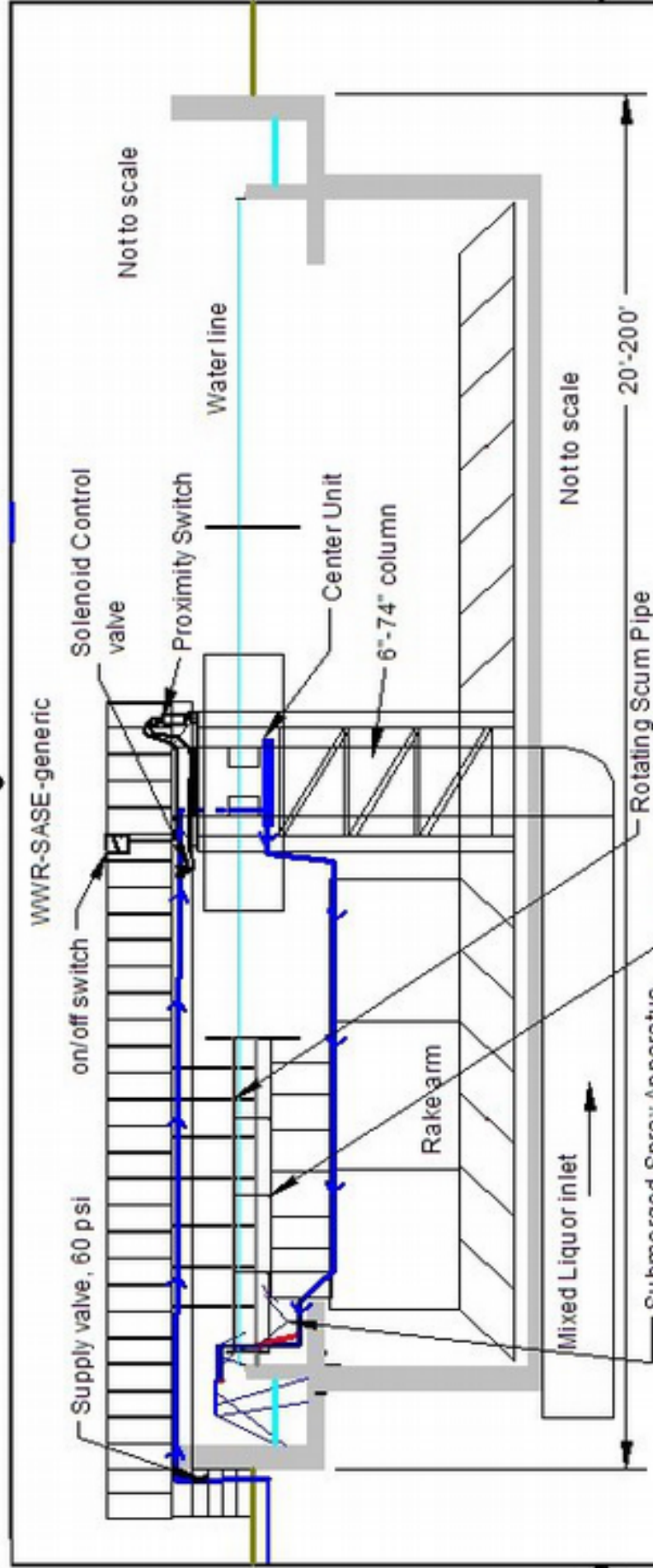


Submerged Articulated Spray Apparatus





- Notes:
1. SASE, Submerged Articulated Spray Apparatus
 2. SASE will fall back up on depressurization of the cylinder
 3. Spray apparatus is held in position by the cylinder until the obstruction is approached and then a proximity switch opens which de-energizes the solenoid valve that depressurizes the system
 4. The solenoid valve stays closed until the spray apparatus passes the obstruction and then the proximity switch moves past the obstruction and energizes the solenoid which opens the valve and the cylinder lifts the spray apparatus back into position for another trip around the clarifier
 5. The WeirWasher, ACS needs only hours per day of operation, the rest of the day the unit is off and the spray apparatus stays submerged & retracted

WEIRWASHER, ACS

Description		WWR-SA-SASE inserted bottom spray	
DRAWN	DATE	SIZE	DWG. NUMBER
Name	B. Gill	8/23/2003	A
APPROVED	Name	B. Gill	8/23/2003
SCALE	1 : 5	REV.	SHEET 1 OF 1

CONFIDENTIAL INFORMATION
 THIS DRAWING & INFORMATION ARE SOLE
 PROPERTY OF GTC AND CANNOT BE
 REPRODUCED, USED OR DISSEMINATED W/O
 THE EXPRESSED PERMISSION OF GTC OR
 ITS REPRESENTATIVE

Not to scale