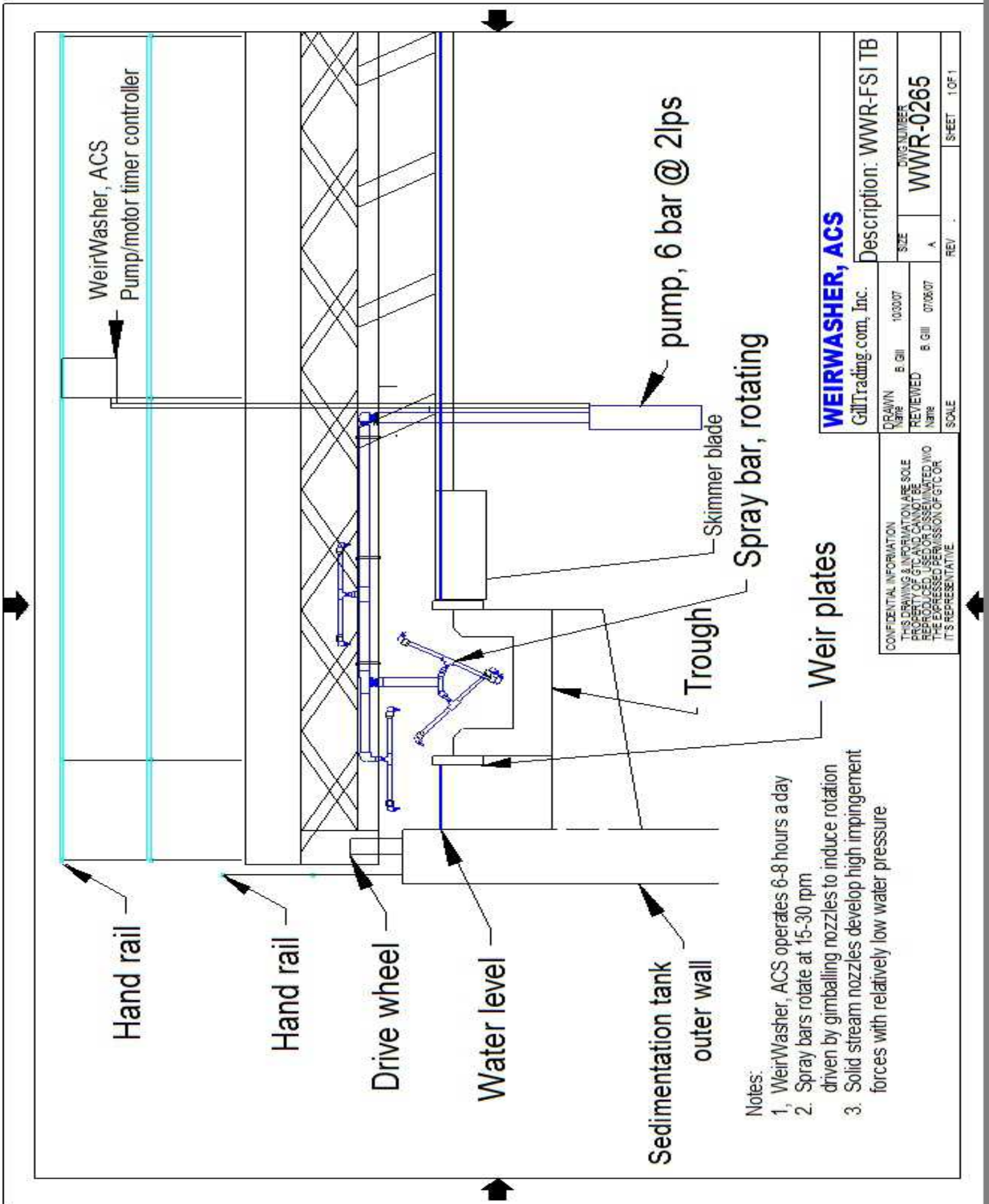


Travelling Bridge Clarifiers



Notes:

1. WeirWasher, ACS operates 6-8 hours a day
2. Spray bars rotate at 15-30 rpm driven by gimballing nozzles to induce rotation
3. Solid stream nozzles develop high impingement forces with relatively low water pressure

WEIRWASHER, ACS

GillTrading.com, Inc.

Description: WWR-FSI TB

SCALE	REV	SIZE	DWG NUMBER
		A	WWR-0265
DRAWN			SHEET
NAME			1 OF 1
REVIEWED			
NAME			
DATE			
BY			
DATE			

CONFIDENTIAL INFORMATION
THIS DRAWING & INFORMATION ARE SOLE
PROPERTY OF GTC AND CANNOT BE
REPRODUCED, USED OR DISSEMINATED W/O
THE EXPRESSED PERMISSION OF GTC OR
ITS REPRESENTATIVE



 Gilltrading
Dynamic Innovation

 Eco-Blaster  Rover

WeirWasher™

AUTOMATED CLEANING SYSTEMS

 Belt Blaster  Weir Shield

