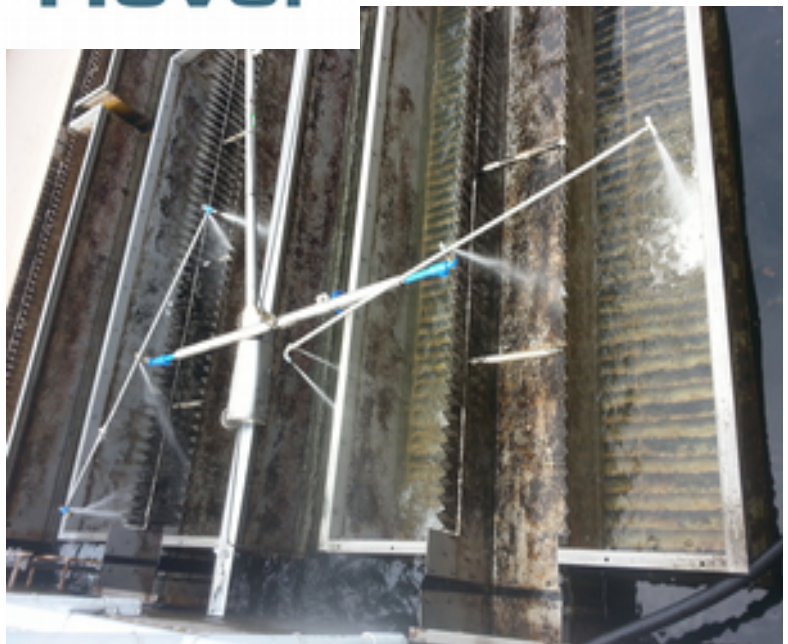
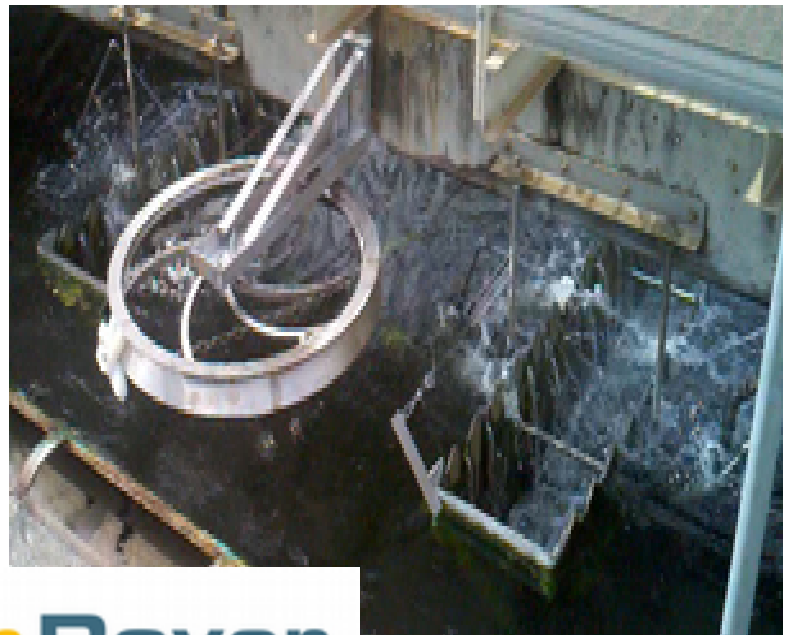
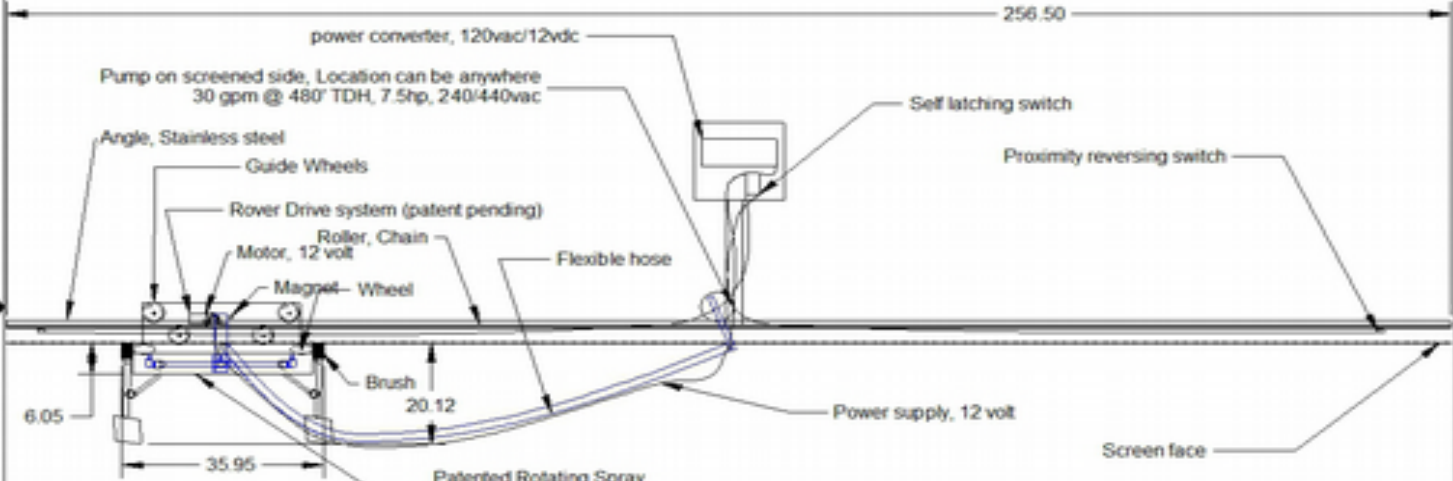


# Weir Rover Radial Cleaning System



# Weir Rover, Radial Cleaning System

**Patented design statement:**  
 This design and configuration are protected under multiple US Patents and Patents pending and are the exclusive property of GillTrading.com, Inc.



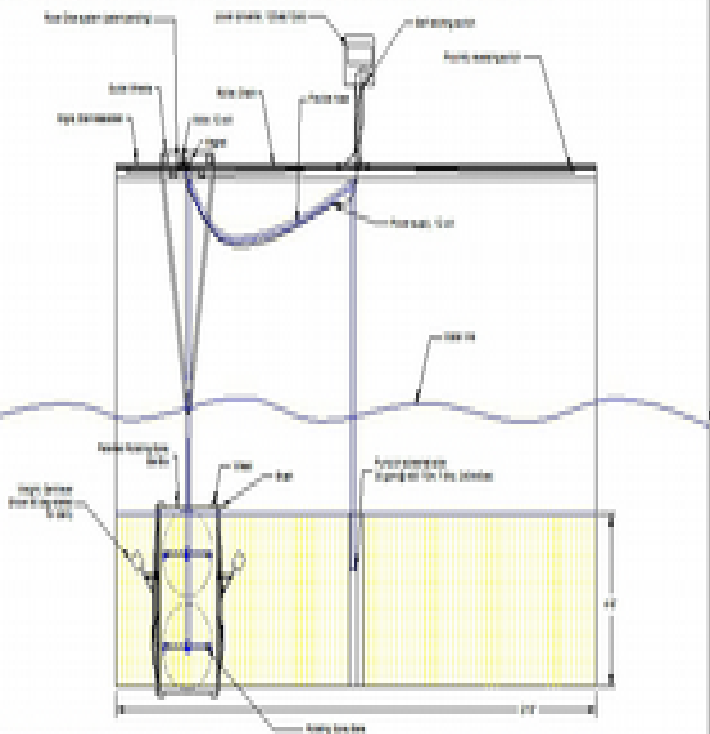
- Notes:**
1. Rotating spray bars are self propelled and penetrate through the screens
  2. Drive motor oscillates between the proximity switches which will reverse the self latching switch
  3. Pump is on the back side of the screen drawing out screened water
  4. Brushes are on both sides of the rotating spray bar box to keep the fry and fish out of the cleaning area
  5. Cantilivered weights distribute force evenly across brushes maintaining contact as they wear

## Fish Screen Washer

GillTrading.Com, Inc		Description: Fish Screen Washer	
Drawn Name	B. Gill 20514	SIZE	DWG NUMBER
Reviewed Name	R. Gill 20514	A	WWR-1017P
SCALE	REV -	SHEET 1 OF 1	

**CONFIDENTIAL INFORMATION**  
 THIS DRAWING AND INFORMATION ARE SOLE PROPERTY OF GILL TRADING, INC. AND CANNOT BE REPRODUCED, LOANED OR DISSEMINATED WITHOUT THE EXPRESS PERMISSION OF GILL TRADING, INC.

**Patented design statement:**  
 This design and configuration are protected under multiple US Patents and Patents pending and are the exclusive property of GillTrading.com, Inc.

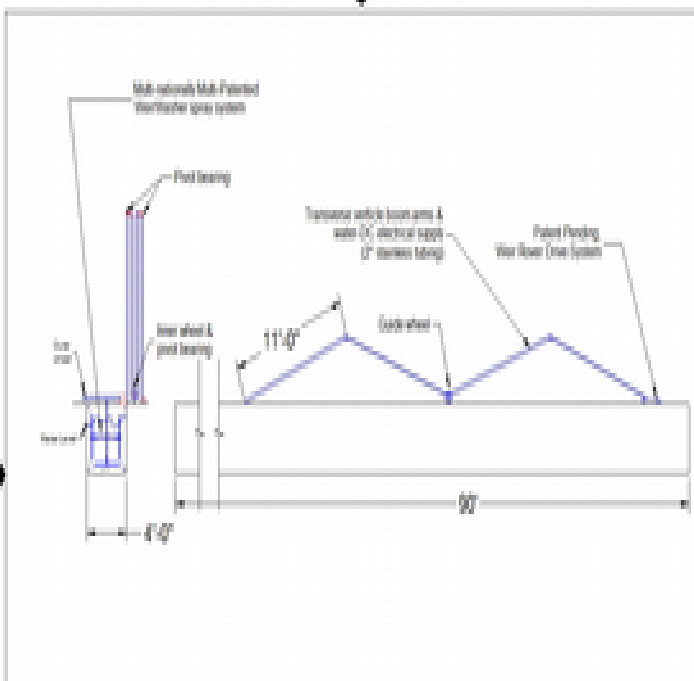


- Notes:**
1. Self propelled spray bars penetrate through the screens
  2. Drive motor oscillates between the proximity switches which will reverse the self latching switch
  3. Pump is on the back side of the screen drawing out screened water
  4. Brushes are on both sides of the rotating spray bar box to keep the fry and fish out of the cleaning area
  5. Cantilivered weights distribute force evenly across brushes maintaining contact as they wear

## Fish Screen Washer

GillTrading.Com, Inc		Description: Fish Screen Washer	
Drawn Name	B. Gill 20514	SIZE	DWG NUMBER
Reviewed Name	R. Gill 20514	A	WWR-1017
SCALE	REV -	SHEET 1 OF 1	

**CONFIDENTIAL INFORMATION**  
 THIS DRAWING AND INFORMATION ARE SOLE PROPERTY OF GILL TRADING, INC. AND CANNOT BE REPRODUCED, LOANED OR DISSEMINATED WITHOUT THE EXPRESS PERMISSION OF GILL TRADING, INC.



- Notes:**
1. Water flows from non-potable water system to inlet supply pump
  2. Water inlet supply pump flows into the transverse vehicle boom arm
  3. Low voltage (DC) power flows with the screen arm to the DC motor
  4. The drive motor powers the length of the channel using proximity switches to reverse direction
  5. Water is supplied for rotating spray bars to remove and control the accumulation of algae and other undesirable materials
  6. The system is controlled via a PLC and timer system
  7. Water is supplied from the existing facility or use water system or for an additional cost a 200 GPM submersible pump

## WEIR ROWER, ACI

GillTrading.com, Inc		Description: Weir Rower	
Drawn Name	B. Gill 20514	SIZE	DWG NUMBER
Reviewed Name	R. Gill 20514	A	WWR-1030
SCALE	REV -	SHEET 1 OF 1	

**CONFIDENTIAL INFORMATION**  
 THIS DRAWING AND INFORMATION ARE SOLE PROPERTY OF GILL TRADING, INC. AND CANNOT BE REPRODUCED, LOANED OR DISSEMINATED WITHOUT THE EXPRESS PERMISSION OF GILL TRADING, INC.